

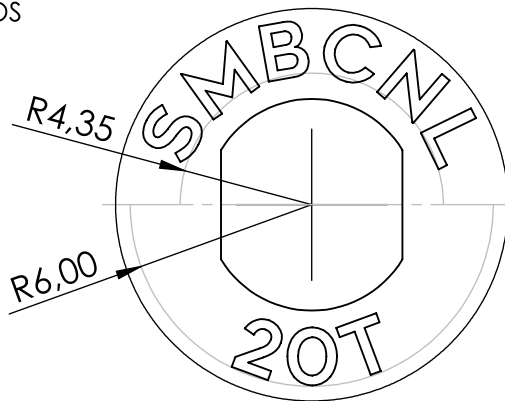
Font: GEOMETOS  
Depth: 0,3mm

**SMBCNL**

Size: 1,85mm  
Centered on  
R4,35 circle

**20T**

Size: 1,85mm  
Width: 120%  
Centered on  
R6,00 circle

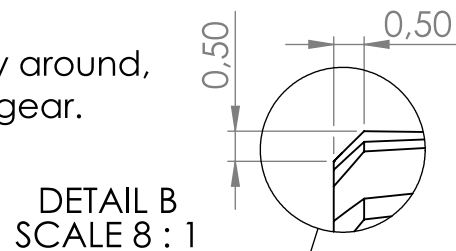


DETAIL A  
TEXT DIMENSIONS

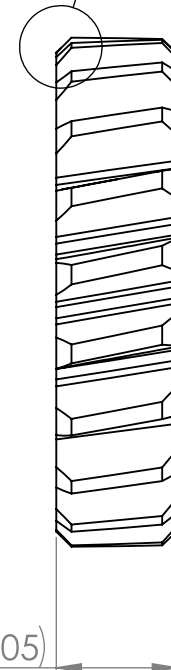
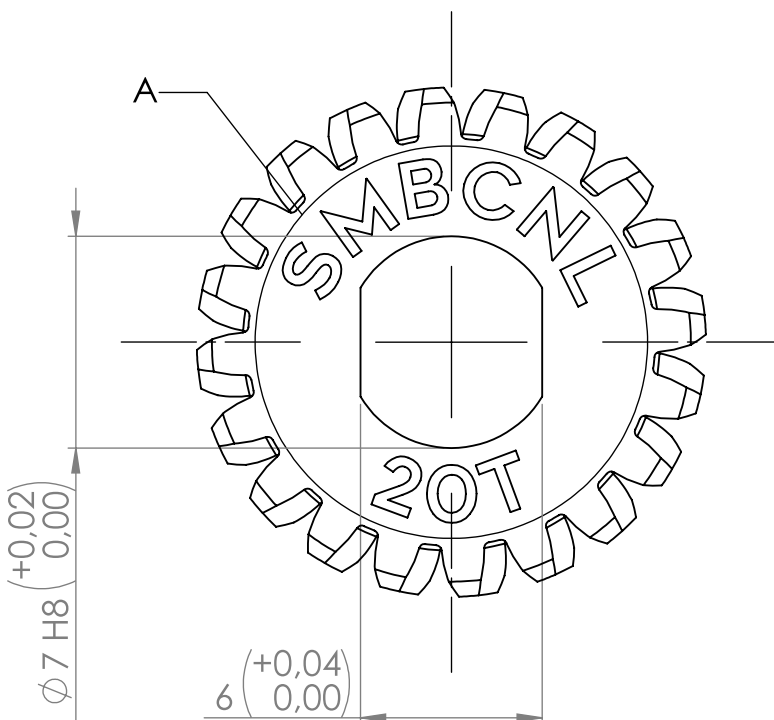
LH Helical 0.75M 20T 12HA  
14,5PA 4FW SPECIFICATIONS

Module	0,75
No. of teeth	20
Helix angle	12°
Pressure angle	14,5°
Face width	4 mm
Hand of helix	Left hand
Root diameter	∅ 13,46 mm
Standart pitch diameter	∅ 15,00 mm
Outside diameter	∅ 16,84 mm

0,50mm, 45° chamfer all the way around,  
both front and back side of the gear.



DETAIL B  
SCALE 8 : 1



ROUGHNESS ACCORDING  
NEN 3634

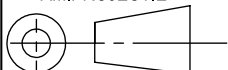
SIZE TOLERANCE ACCORDING  
NEN 2365

MATERIAL:  
C45 (1.0503)

WEIGHT:  
4,51 gram

SHAPE- AND PLACETOLERANCE  
ACCORDING NEN 3311

AM.PROJECTIE



SCALE: 4:1

DRAWN BY: G.T.

NOTES:

UNITS: mm

CHECKED BY: G.T.

DATE: 7-9-2020

PROJECT: FA Panoramadaktandwiel



TECHNISCHE  
TEKENINGEN

BENAMING:

SMBCNL PAN.DAK.20T

NUMBER:  
1

A4